



Rubbish Report 2002



Executive Summary

The Clean Up Australia Rubbish Report provides a snapshot of not only what rubbish volunteers find on Clean Up Australia Day each year, but also an insight into how effective initiatives to reduce rubbish and litter have been in Australia.

Approximately 500,000 volunteers were involved in Clean Up Australia Day 2002 at 5415 clean up sites across the country. The campaign is the largest of its kind in Australia and the range of locations – coastal, transport corridors, recreational, rural and urban – that clean up activities are conducted in provides a unique opportunity to identify ongoing problem areas, the types of litter that are being targeted and removed through reduction initiatives and the sort of behaviour that leads to a litter problem.

There are many localised reduction initiatives, mostly co-ordinated by local government or community groups, that target rubbish removal and reduction. Successive Rubbish Reports continue to highlight the need for ongoing action at the source, where the material is manufactured, and emphasise a need for both consumer and producer responsibility.

The National Packaging Covenant is the leading national instrument for managing packaging waste in Australia. It was signed by state and territory environment ministers, Local Government and a broad range of industries in the packaging supply chain in August 1999. It is intended to not only minimise packaging waste but also maximise recycling and diversion of materials from landfill.

Results of the 2002 Rubbish Report support the ongoing need to further reduce packaging waste, given the high presence of packaging items still being collected on Clean Up Australia Day. The Report also supports the need for more to be done in encouraging recycling to remove the high incidence of recyclable litter polluting the natural environment (more than half the rubbish collected on Clean Up Australia Day could have been recycled).

As much as education is the key to reducing consumer-littering behaviour, genuine support from industry for kerbside and public place recycling initiatives is also essential. The findings of the Rubbish Report emphasise the need for greater and ongoing commitment from industry and government to both education and recycling initiatives.

Key Survey Results

- Plastic continues to be the main source of rubbish type collected (34%) and was most likely to be found at beach or coastal sites.
- Chip and confectionery bags were the most common plastic item found on Clean Up Australia Day 2002. This item represented 19% of all plastic items collected and 6.3% of all rubbish items collected.
- “Miscellaneous” was the second most common source of rubbish type collected (16%) and was most likely to be found at, or around, shops or malls.
- Cigarette butts accounted for 84% of the miscellaneous rubbish items collected this year. This was a 5% decrease from 2001. Cigarette butts rank number one on the ‘10 Least Wanted Items’ list.
- More cigarette butts are found on Clean Up Australia Day than any other rubbish item, representing 13.5% of all rubbish collected in 2002.
- Glass alcoholic beverage bottles, plastic chip and confectionery bags and small paper pieces follow cigarette butts on the 10 Least Wanted Items list. This result is the same as in 2001.

- The 10 Least Wanted Items list represents 48% of all rubbish collected on Clean Up Australia Day 2002.
- Glass represented 12% of all rubbish collected, the same result as in 2001.
- Alcoholic beverage bottles were the most common glass item collected (40% of all glass items), closely followed by glass pieces (39% of all glass items).
- 7% of rubbish collected was polystyrene, an increase from 2% in 2001.
- The most common type of polystyrene rubbish collected was pieces of foam, representing 36% of all polystyrene collected. The amount of foam packaging collected increased from 15% in 2001 to 29% in 2002. The amount of cups and plates collected fell from 23% of all polystyrene in 2001 to 14% this year.
- Less rubber is collected on Clean Up Australia Day than any other type of rubbish. Rubber represents 1% of all rubbish collected.
- Gloves were the most common item of rubber collected in 2002, replacing tyres for the first time as the most common rubber item found on Clean Up Australia Day. Gloves represented 24% of all rubber items collected, followed closely by tyres (22%).
- Roadways were the most polluted sites on Clean Up Australia Day having the highest average number of surveyed items (548 items) per site.
- River/creek sites were the least polluted, with an average of 369 items of rubbish per site.
- 38% of all rubbish collected was found at either parks/waterfronts or roadways.

© Copyright Clean Up Australia 2002.

This publication is copyright and remains the intellectual property of Clean Up Australia.

No part of it may be reproduced by any means without the prior written consent of Clean Up Australia.

Sponsors & Suppliers

Major Sponsors



Collex provides financial support for Clean Up Australia Day. Collex plays a major role in Clean Up Australia Day by organising clean up sites in Sydney, Western Australia and South Australia involving hundreds of Collex staff and volunteers. Collex also provided skip bins and waste transport vehicles across metropolitan areas.



Ford Australia provides financial and logistical support for Clean Up Australia Day through its staff and Dealer network across Australia.



McDonald's has been a long time supporter of Clean Up Australia Day. McDonald's provides financial and promotional support through in-store promotions in restaurants around Australia.

McDonald's believes that a business leader should also be an environmental leader.

Internet Partner



Official Suppliers



Official Supporters



Methodology

In 2002, only those site supervisors who expressed an interest in completing the Rubbish Report were issued with a survey form to complete on the day. This new approach to sampling rubbish collected on the day was adopted to improve the quality of information for the rubbish report. This is a departure from previous years where a Rubbish Report survey form was issued to every site supervisor and where up to half of the forms returned could not be used due to incorrect or incomplete data.

The rubbish report survey form lists 93 specific items grouped under eight material types. These material types make up 'The Major Sources of Rubbish' and include; plastic, polystyrene foam, glass, rubber, paper/cardboard, metal/aluminum, wood and miscellaneous items.

The Rubbish Report Survey requires surveyors to identify and count a proportion of the rubbish collected at their site. Each surveyor is required to count the rubbish in every fifth bag collected and is advised to stop once they have surveyed 10 bags. If less than 5 bags are collected the site supervisor is required to count the contents of just 1 bag. To help determine the proportion of recyclables collected each surveyor is also asked to indicate for each item collected whether it is recyclable in their area.

Each site surveyed is classified into a site category (e.g. beach, waterway, road etc.). This year the categories were expanded to list Shop/Malls; School Grounds; and Outdoor Transport as separate categories normally included in the general "Other" category. The definition of each category type is explained on the form. Surveyors are requested to nominate only one site category that best describes their location.

9% (i.e. 495 sites) of the total 5415 clean up sites around Australia were surveyed, with 28.3% of the bags collected at these survey sites being surveyed (i.e. 2,282 of the 8067 bags collected were surveyed correctly).

The return rate of correctly completed forms increased by nearly 20 percent with 495 or the 651 forms returned being completed correctly and used for data analysis. This represents a 76% successful return rate. This new approach seeking expressions of interest to participate in the survey has not only improved the data quality but has also reduced costs and paper use associated with printing, publishing and distribution of survey forms and associated materials.

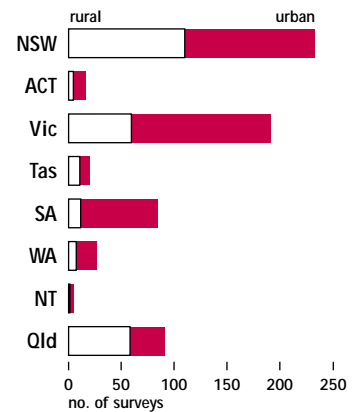
Sites Where the Surveys Were Carried Out

The “returned surveys by state” graph shows the number of surveys returned for each state and the distribution between urban and rural areas. NSW returned the most surveys followed by Victoria then Queensland. Nationally, 61.6% of the sites surveyed were in urban areas with the balance (38.4%) in rural areas. Queensland and the Northern Territory were the only state/territory where more surveys were carried out in rural areas rather than urban areas.

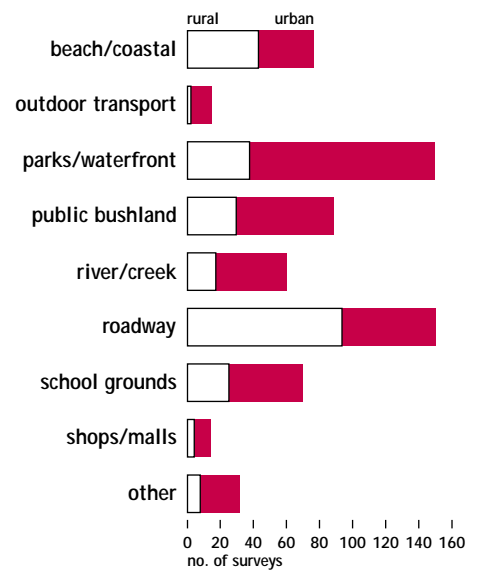
Parks/waterfront and roadway sites accounted for 23 per cent each of all sites surveyed followed by public bushland sites at 13 per cent, beach/coastal sites at 12 per cent, school grounds 11 per cent, river and creek sites 9.4 per cent and “Other” sites 4 per cent. Both outdoor transport sites and shops/malls accounted for 2 per cent each.

The “returned surveys by site” graph shows the proportion of rural and urban surveys by site categories. For most site categories the percentage of rural sites surveyed ranged between 22-33% of total sites surveyed in each category, except in the case of beach/coastal and roadway sites where the proportion of rural sites surveyed was 50% and 63% of total sites surveyed respectively.

Returned surveys by state

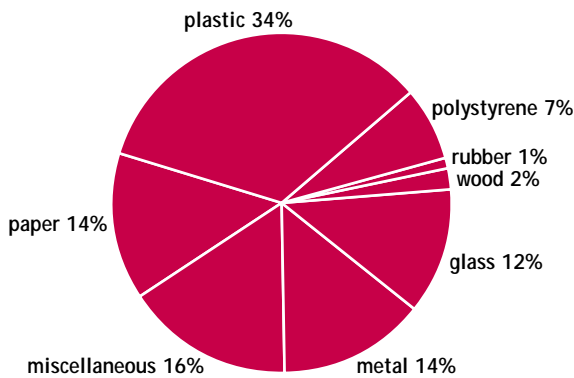


Returned surveys by site



Major Sources of Rubbish

Major sources of rubbish



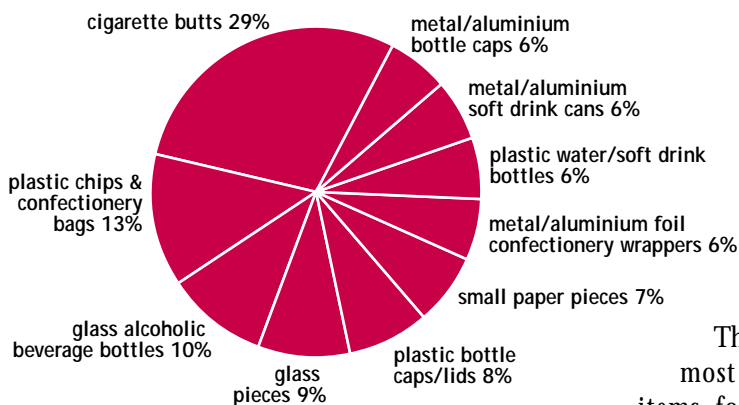
Following an eight-year trend, plastic was once again the most common source of rubbish found on Clean Up Australia Day 2002, accounting for 34% of all the rubbish found.

The second most common source of rubbish found was “miscellaneous”, followed by paper/cardboard and metal/aluminium (both represented 14% of rubbish surveyed), then glass and polystyrene foam. Wood and rubber were found least.

“Miscellaneous” rubbish, of which cigarette butts are the major item, has increased significantly in recent years. Prior to 2001, it was the fourth most commonly found rubbish but has now risen to second. A key contributor to this rise is cigarette butts, which have increased significantly in Rubbish Report counts in the past two years. Metal/Aluminium rubbish has dropped from the second most common source of rubbish in 2000 to be even with Paper/cardboard in third position.

Site Supervisors, who do the Rubbish Report survey, find that a significant amount of the rubbish collected each year is recyclable.

Rubbish top ten



The Ten Least Wanted Items

Each year, the Rubbish Report identifies a “10 Least Wanted Items” list.

This list represents the 10 most common rubbish items found on Clean Up Australia Day. Cigarette butts were again the most common item making up 29% of the 10 Least Wanted Items list and accounting for just over 13% of all rubbish found in 2002, a decrease of 2% from 2001.

The composition of the 10 Least Wanted Items list has changed little over time with 7 of these items i.e. Cigarette Butts; Plastic Chip and Confectionary Bags; Glass Alcoholic Beverage Bottles; Glass Pieces; Plastic Bottle Caps/lids; Small Paper Pieces and Metal/Aluminium Soft Drink Cans occurring in the 10 Least Wanted Items list for the past 5 years.

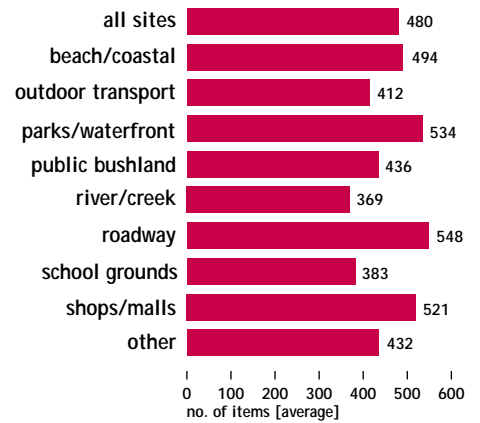
The 10 Least Wanted Items list in 2002 represented just over 48% of all rubbish collected. With the 20 most commonly surveyed rubbish items accounting for nearly 68% of all the rubbish found. Most of the 10 Least Wanted Items list are recyclable and could easily be prevented from spoiling the natural environment by responsible use of kerbside and public place recycling as well as recycling facilities at local waste management centres.

The Most Polluted Areas in Australia

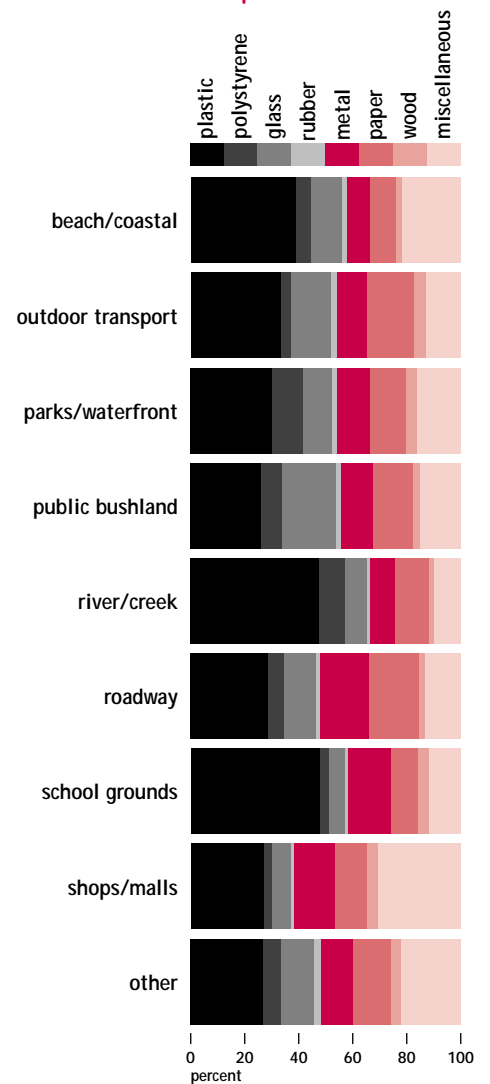
Roadway sites were the most polluted areas found on Clean Up Australia Day as shown in the “total rubbish distribution” chart. An average of 548 items of rubbish was surveyed at these sites. Park/waterfront sites were the next most polluted with an average of 534 items of rubbish per site. Clean up sites along rivers and creeks had the lowest average (369 items of rubbish per site) for the second year in a row. In previous years river/creek sites rated as the second most polluted areas.

The source and proportions of rubbish types found at these sites are shown in the “site rubbish composition” chart. River/creeks and school grounds have the largest proportion of plastic rubbish while shops/malls have the highest proportion of miscellaneous rubbish. Rubber and wood are represented in minimal proportions in all site categories. Metal/aluminium rubbish was mostly found along roadway sites.

Total rubbish distribution

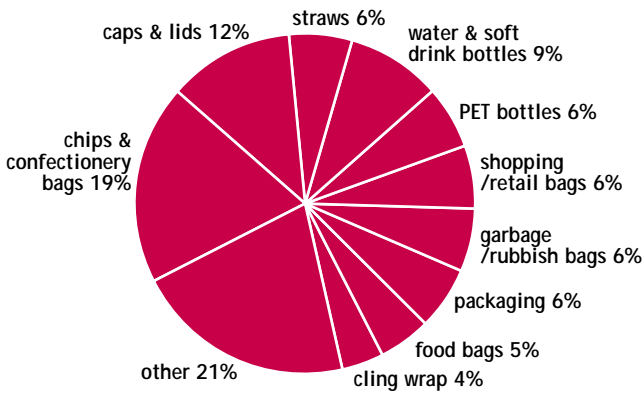


Site rubbish composition



Plastics

types of glass rubbish found

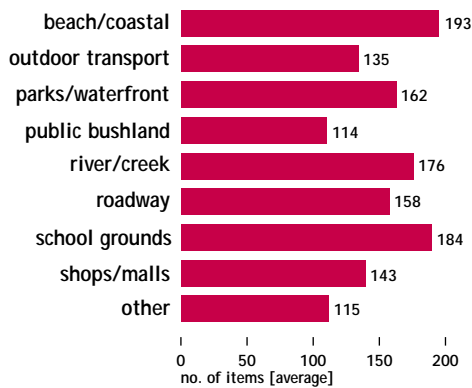


Plastics were again the most common source of rubbish type found this year, representing 34% of all rubbish surveyed. The most common plastic item surveyed this year was once again chip and confectionary bags, comprising 19% of all plastic rubbish.

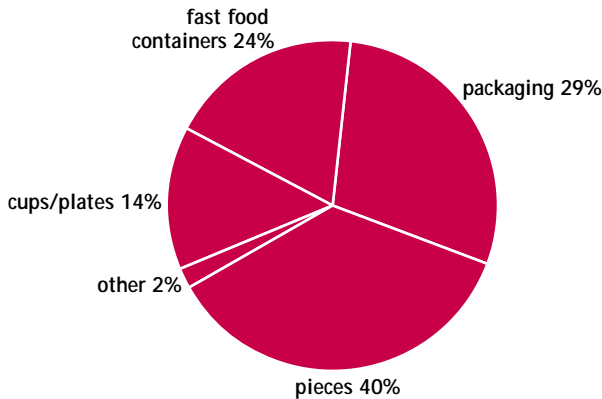
This item came in at number three on The 10 Least Wanted Items list and accounted for just over 6% of all rubbish found on Clean Up Australia Day.

Plastic bottle caps/lids and water/soft drink bottles also made The 10 Least Wanted Items list this year. Beach/coastal clean up sites had the highest average number of plastic items/site (193 items per site). Public bushland sites had the lowest average number of plastic items/site (113.9 items per site).

plastic rubbish distribution



types of polystyrene rubbish found



Polystyrene

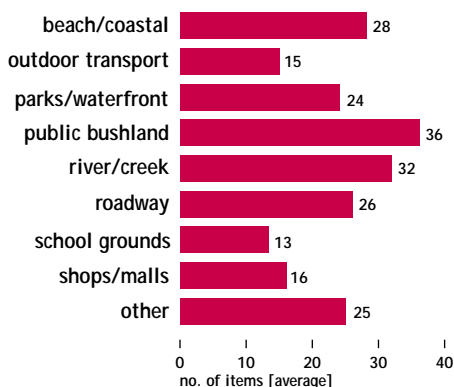
Polystyrene accounted for 7% of all rubbish surveyed in 2002, an increase of 2% from last year.

Polystyrene pieces made up the bulk of polystyrene surveyed (36%), followed by packaging (29%) and fast food containers (19%). Polystyrene packaging increased from 15% of all polystyrene found last year to 29% this year.

Polystyrene cups and plates dropped from 23% in 2001 to 14% of all polystyrene rubbish found this year.

Public bushland clean up sites had the highest average number of polystyrene items/site (36 items per site). Clean Up sites in school grounds were the least polluted with an average number of polystyrene items/site of 13.

polystyrene rubbish distribution

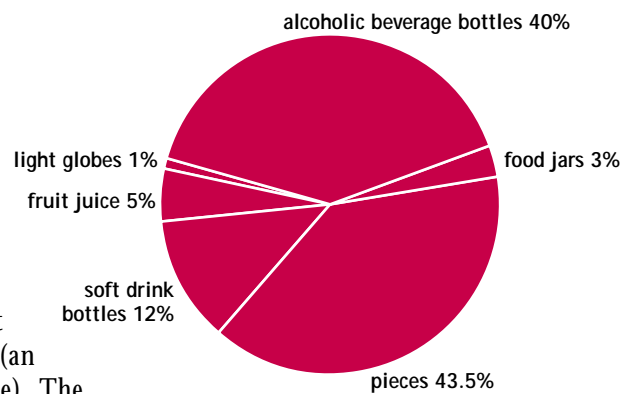


Glass

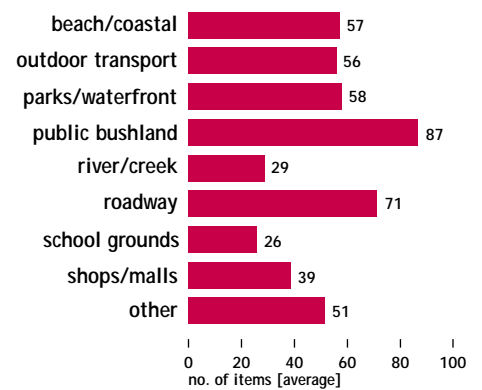
Glass represented 12% of all rubbish surveyed in 2002. Alcoholic beverage containers accounted for 40% of all the glass rubbish found and came in at number three in the 10 Least Wanted Items list (4.78% of all rubbish). Glass pieces were the next most common glass rubbish found (39%) and came in at number four in the 10 Least Wanted Items list (4.59% of all rubbish). The amount of glass alcoholic beverage containers surveyed fell by 9% this year while glass pieces were up by 6%.

Roadways and public bushland sites were the most likely places to find glass items with an average of 71 and 87 items per site respectively. Thankfully, clean up sites in school grounds were the least likely places to find glass (an average of 26 items per site). The national average was 58 items per site.

types of glass rubbish found



glass rubbish distribution

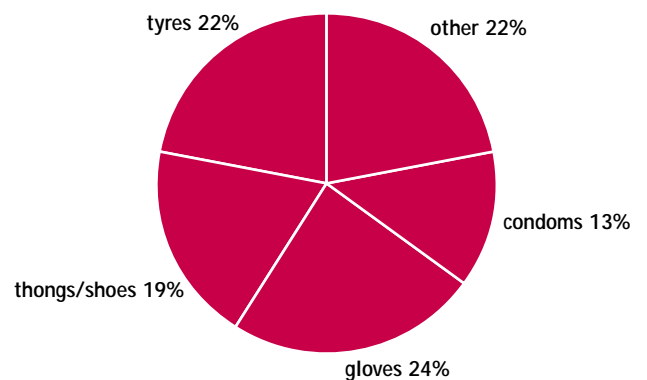


Rubber

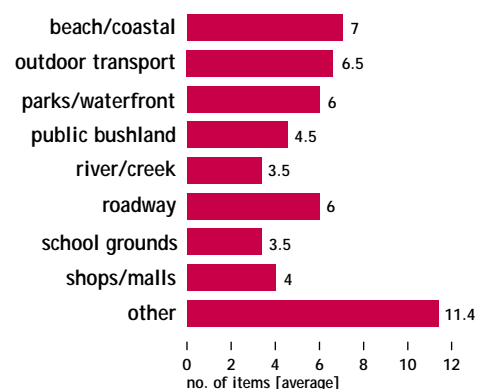
Rubber was again the least surveyed source of rubbish on Clean Up Australia Day 2002 (1.15% of all rubbish found). In 2000 and previous years, tyres were the most common rubber item found. This trend changed in 2001 when tyres and "other" rubber items were the most common rubber items found, each representing 22% of all rubber items surveyed. This year, gloves were the most common rubber rubbish found (24%) while tyres and "other" rubber rubbish items were equal second (22%). Thongs/shoes accounted for 19% of all rubber rubbish found.

Rubber rubbish was more often found at "other" sites than any other (11.4 items per site), followed by beach and coastal sites with an average of 7 items per site. The national average was 5.6 items of rubber rubbish per site. School grounds and river/creek sites both had an average of 3.5 items of rubber rubbish per site.

types of rubber rubbish found

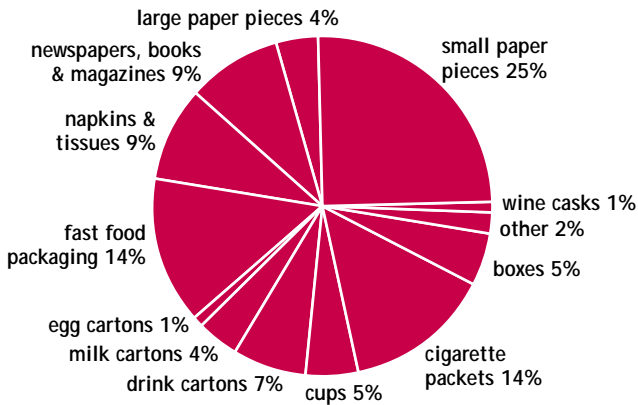


rubber rubbish distribution

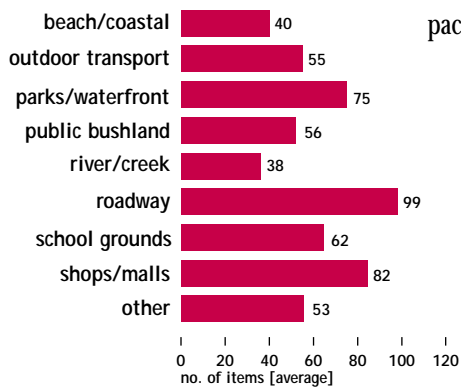


Paper & Cardboard

types of paper rubbish found



paper rubbish distribution

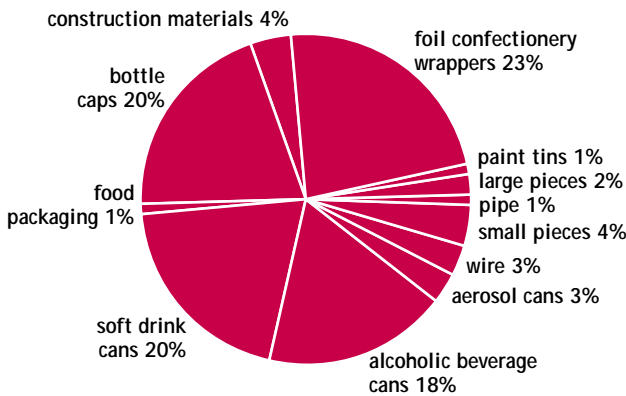


Paper and cardboard rubbish was equal with metal/aluminium rubbish this year, both representing 14% of all rubbish surveyed. The most common paper rubbish found was again small paper pieces (25% of all paper/cardboard rubbish), followed by cigarette packets and fast food packaging at 14%.

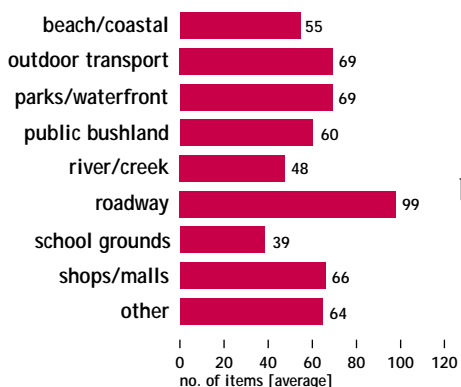
Small paper pieces also came in at fourth on the 10 Least Wanted Items list (3.48% of all rubbish surveyed).

The national average number of paper/cardboard items per site was 68. Roadway sites had a higher than average number of paper items with 99 paper items per site. River/creek sites were the least polluted by paper items with 38 items per site.

types of metal rubbish found



metal rubbish distribution



Metal & Aluminium

Metal and aluminium rubbish accounted for 14.13% of all rubbish surveyed on Clean Up Australia Day 2002. Foil confectionery wrappers (21.9% of all metal/aluminium rubbish found) were the most common metal/aluminium item collected, followed by aluminium soft drink cans (20.0%), bottle caps (19.7%) and aluminium alcoholic beverage containers (17.9%).

These four items of rubbish accounted for 79.6% of all the metal aluminium rubbish found.

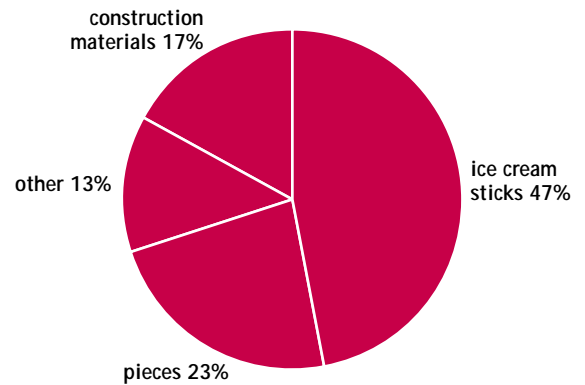
Metal and aluminium was most commonly found at roadway clean up sites. At these sites an average of 99 metal and aluminium items were found, higher than the national average of 67 items across all site categories. All other site categories had an average at or below the national average with school grounds (39) being the least polluted by metal/aluminium items.

Wood

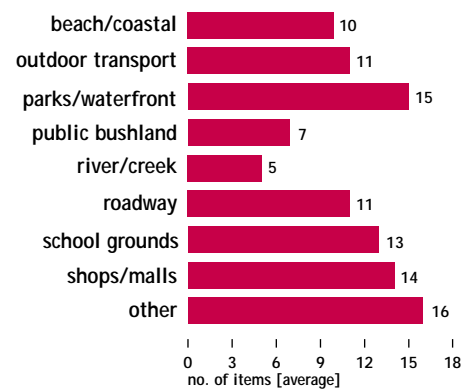
2.33% of all rubbish surveyed this year was wood, making it the second least found rubbish on Clean Up Australia Day. Nearly half the wood rubbish found were ice cream sticks (47% of all wood rubbish), followed by wood pieces (23%), construction materials (17%) and “other” wood items (13%). The “other” section has increased from 7% last year to 13% of all wood rubbish found this year. All the site categories had an average of 16 or less items of wood rubbish with the national average being only 11.3 items of wood rubbish per site.

Wood rubbish was most commonly found at “other” sites. Wood rubbish found least at river/creek clean up sites with an average of just 5 items per site.

types of wood rubbish found



wood rubbish distribution



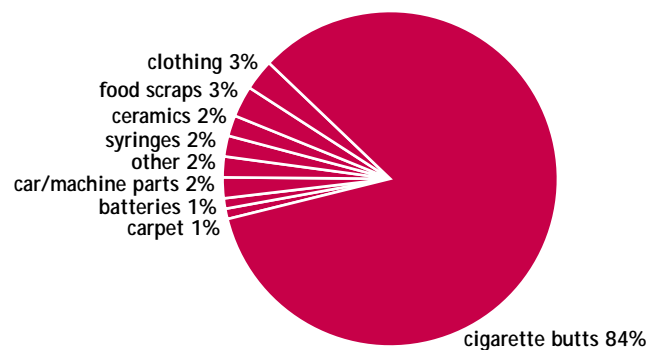
Miscellaneous Items

Miscellaneous rubbish includes items that don't fit under the other material types on the survey form. Included in this are items such as carpet, clothing, car parts, furniture, cigarette butts and syringes. Miscellaneous items were the second highest source of rubbish found, accounting for 13.5% of all rubbish collected.

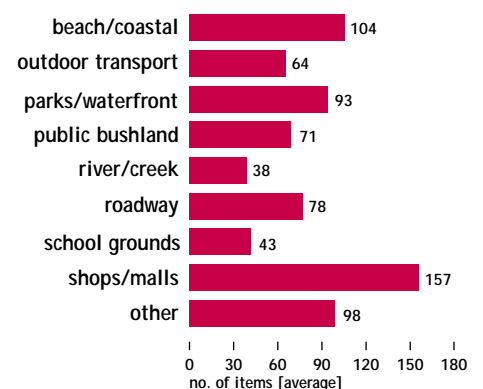
Cigarette butts make up the majority of miscellaneous items (84%), a 5% decrease from 2001. Cigarette butts head the 10 Least Wanted Items list at 13.52% of all rubbish found.

The most common sites to find miscellaneous items were shops and malls (an average of 157 items per site), nearly double the national average of 79 items per site. Beach/coastal sites were the next most common places to find miscellaneous rubbish with an average of 104 items per site. River/creek clean up sites had the least of this type of rubbish (an average of 38 items per site).

types of miscellaneous rubbish found



miscellaneous rubbish distribution



Number of surveyed items by site category

| | Beach/ Coastal | Roadway | Parks/ Waterfront | Rivers/ Creeks | Public Bushland | Outdoor Transport | School Grounds | Shops/ Malls | Other | Total | % |
|----------------------------------|-------------------|-------------|----------------------|-------------------|--------------------|----------------------|-------------------|-----------------|-------------|--------------|--------------|
| PLASTIC | | | | | | | | | | | |
| bags | | | | | | | | | | | |
| chips & confectionery | 1807 | 3004 | 3303 | 1212 | 1274 | 210 | 3349 | 161 | 497 | 14817 | 6.1% |
| food | 807 | 514 | 924 | 283 | 298 | 29 | 675 | 27 | 75 | 3632 | 1.5% |
| garbage/rubbish | 1313 | 1288 | 868 | 159 | 301 | 87 | 694 | 58 | 24 | 4792 | 2.0% |
| supermarket/retail | 685 | 950 | 1391 | 553 | 511 | 183 | 453 | 71 | 136 | 4933 | 2.0% |
| other | 465 | 101 | 91 | 245 | 88 | 53 | 62 | 37 | 69 | 1211 | 0.5% |
| total bags | 5077 | 5857 | 6577 | 2452 | 2472 | 562 | 5233 | 354 | 801 | 29385 | 12.2% |
| bottles | | | | | | | | | | | |
| automotive oils | 16 | 94 | 88 | 18 | 62 | 4 | 8 | 2 | 15 | 307 | 0.1% |
| food (sauces) | 86 | 388 | 334 | 110 | 137 | 30 | 243 | 66 | 32 | 1426 | 0.6% |
| milk | 116 | 446 | 371 | 149 | 150 | 43 | 144 | 28 | 37 | 1484 | 0.6% |
| laundry/cleaning | 30 | 92 | 80 | 30 | 46 | 5 | 13 | 0 | 7 | 303 | 0.1% |
| PET | 392 | 891 | 1360 | 699 | 877 | 44 | 298 | 120 | 208 | 4889 | 2.0% |
| fruit juice | 259 | 596 | 666 | 241 | 399 | 55 | 466 | 28 | 97 | 2807 | 1.2% |
| water/soft drink | 956 | 1706 | 1688 | 1219 | 720 | 117 | 464 | 106 | 133 | 7109 | 2.9% |
| other | 110 | 103 | 124 | 68 | 45 | 36 | 44 | 29 | 37 | 596 | 0.2% |
| total bottles | 1965 | 4316 | 4711 | 2534 | 2436 | 334 | 1680 | 379 | 566 | 18921 | 7.8% |
| miscellaneous | | | | | | | | | | | |
| bottle caps/lids | 1765 | 2234 | 2593 | 647 | 659 | 89 | 837 | 201 | 272 | 9297 | 3.9% |
| cigarette lighter | 107 | 180 | 313 | 96 | 77 | 22 | 64 | 16 | 15 | 890 | 0.4% |
| cling wrap | 135 | 536 | 656 | 62 | 190 | 49 | 1352 | 54 | 126 | 3160 | 1.3% |
| packaging | 789 | 1141 | 790 | 149 | 675 | 21 | 655 | 69 | 90 | 4379 | 1.8% |
| containers | 98 | 244 | 174 | 62 | 54 | 12 | 281 | 16 | 72 | 1013 | 0.4% |
| cutlery/cups/utensils | 221 | 256 | 492 | 104 | 218 | 42 | 135 | 133 | 53 | 1654 | 0.7% |
| disposable nappies | 19 | 106 | 100 | 39 | 68 | 28 | 36 | 7 | 15 | 418 | 0.2% |
| fishing equipment | 142 | 75 | 134 | 20 | 10 | 5 | 9 | 4 | 22 | 421 | 0.2% |
| toys & sporting equipment | 48 | 74 | 119 | 57 | 108 | 6 | 54 | 7 | 16 | 489 | 0.2% |
| crates | 6 | 62 | 87 | 56 | 22 | 11 | 36 | 4 | 5 | 289 | 0.1% |
| rope (metres) | 124 | 141 | 209 | 29 | 30 | 24 | 49 | 33 | 16 | 655 | 0.3% |
| PVC pipe (metres) | 34 | 217 | 103 | 327 | 51 | 4 | 32 | 5 | 11 | 784 | 0.3% |
| sanitary pads/surgical dressings | 17 | 33 | 95 | 17 | 31 | 4 | 26 | 0 | 4 | 227 | 0.1% |
| six pack rings | 67 | 174 | 489 | 62 | 56 | 12 | 54 | 8 | 35 | 957 | 0.4% |
| straws | 608 | 971 | 1391 | 550 | 394 | 84 | 781 | 198 | 241 | 5218 | 2.2% |
| tapes/straps/fastenings | 48 | 200 | 382 | 70 | 99 | 12 | 99 | 38 | 45 | 993 | 0.4% |
| other | 285 | 530 | 271 | 173 | 107 | 17 | 127 | 19 | 7 | 1536 | 0.6% |
| total miscellaneous | 4513 | 7174 | 8398 | 2520 | 2849 | 442 | 4627 | 812 | 1045 | 32380 | 13.4% |
| total all plastic | | | | | | | | | | 80686 | 33.4% |
| POLYSTYRENE FOAM | | | | | | | | | | | |
| cups/plates | 248 | 474 | 705 | 195 | 291 | 6 | 335 | 47 | 146 | 2447 | 1.0% |
| fast food containers | 167 | 791 | 1132 | 145 | 368 | 109 | 160 | 88 | 178 | 3138 | 1.3% |
| packaging | 98 | 467 | 3794 | 67 | 305 | 1 | 132 | 18 | 27 | 4909 | 2.0% |
| pieces | 1081 | 1055 | 1322 | 913 | 1379 | 22 | 188 | 18 | 130 | 6108 | 2.5% |
| other | 9 | 9 | 15 | 9 | 9 | 9 | 10 | 11 | 9 | 90 | 0.0% |
| total polystyrene | 1603 | 2796 | 6968 | 1329 | 2352 | 147 | 825 | 182 | 490 | 16692 | 6.9% |
| GLASS | | | | | | | | | | | |
| alcoholic beverage bottles | 1343 | 3025 | 2595 | 587 | 2532 | 334 | 460 | 130 | 544 | 11550 | 4.8% |
| food jars | 92 | 229 | 175 | 60 | 161 | 5 | 74 | 33 | 45 | 874 | 0.4% |
| pieces | 1284 | 2742 | 2998 | 324 | 2312 | 144 | 780 | 121 | 293 | 10998 | 4.6% |
| soft drink bottles | 340 | 1018 | 846 | 185 | 584 | 27 | 157 | 91 | 92 | 3340 | 1.4% |
| fruit juice bottles | 177 | 476 | 421 | 56 | 134 | 14 | 129 | 35 | 52 | 1494 | 0.6% |
| light globe | 9 | 80 | 19 | 8 | 18 | 3 | 25 | 3 | 1 | 166 | 0.1% |
| other | 12 | 8 | 10 | 3 | 84 | 4 | 3 | 0 | 12 | 136 | 0.1% |
| total glass | 3257 | 7578 | 7064 | 1223 | 5825 | 531 | 1628 | 413 | 1039 | 28558 | 11.8% |
| RUBBER | | | | | | | | | | | |
| condoms | 112 | 26 | 155 | 18 | 34 | 4 | 16 | 3 | 11 | 379 | 0.2% |
| gloves | 39 | 117 | 214 | 37 | 87 | 4 | 111 | 34 | 11 | 654 | 0.3% |
| thongs/shoes | 141 | 112 | 101 | 34 | 56 | 10 | 42 | 4 | 30 | 530 | 0.2% |
| tyres | 33 | 292 | 105 | 28 | 84 | 25 | 12 | 1 | 37 | 617 | 0.3% |
| other | 65 | 121 | 134 | 24 | 40 | 15 | 41 | 1 | 162 | 603 | 0.2% |
| total rubber | 390 | 668 | 709 | 141 | 301 | 58 | 222 | 43 | 251 | 2783 | 1.2% |

| | Beach/ Coastal | Roadway | Parks/ Waterfront | Rivers/ Creeks | Public Bushland | Outdoor Transport | School Grounds | Shops/ Malls | Other | Total | % |
|------------------------------------|-------------------|--------------|----------------------|-------------------|--------------------|----------------------|-------------------|-----------------|-------------|---------------|--------------|
| PAPER | | | | | | | | | | | |
| bags | 175 | 556 | 632 | 69 | 233 | 27 | 311 | 56 | 45 | 2104 | 0.9% |
| boxes | 83 | 527 | 376 | 82 | 121 | 11 | 183 | 36 | 59 | 1478 | 0.6% |
| cigarette packets | 310 | 1785 | 982 | 303 | 588 | 54 | 241 | 97 | 90 | 4450 | 1.8% |
| cups | 177 | 387 | 343 | 118 | 255 | 38 | 93 | 50 | 30 | 1491 | 0.6% |
| drink cartons | 103 | 704 | 542 | 99 | 262 | 15 | 328 | 40 | 99 | 2192 | 0.9% |
| milk cartons | 109 | 488 | 341 | 94 | 136 | 32 | 101 | 37 | 62 | 1400 | 0.6% |
| egg cartons | 0 | 72 | 67 | 2 | 16 | 9 | 29 | 13 | 8 | 216 | 0.1% |
| fast food packaging | 139 | 1373 | 1261 | 191 | 698 | 72 | 330 | 178 | 254 | 4496 | 1.9% |
| napkins & tissues | 278 | 712 | 884 | 65 | 269 | 40 | 348 | 83 | 71 | 2750 | 1.1% |
| newspapers/books/magazines | 262 | 1027 | 622 | 96 | 386 | 58 | 176 | 96 | 72 | 2795 | 1.2% |
| large paper (>A4) | 231 | 293 | 184 | 102 | 169 | 13 | 120 | 14 | 15 | 1141 | 0.5% |
| small paper | 347 | 2580 | 2627 | 232 | 597 | 102 | 1406 | 248 | 228 | 8367 | 3.5% |
| wine casks | 29 | 103 | 61 | 44 | 17 | 8 | 15 | 27 | 14 | 318 | 0.1% |
| other | 27 | 148 | 230 | 116 | 30 | 17 | 167 | 15 | 11 | 761 | 0.3% |
| total paper & cardboard | 2270 | 10755 | 9152 | 1613 | 3777 | 496 | 3848 | 990 | 1058 | 33959 | 14.1% |
| METAL/ALUMINIUM | | | | | | | | | | | |
| cans | | | | | | | | | | | |
| aerosol | 70 | 473 | 137 | 445 | 104 | 94 | 58 | 20 | 35 | 1436 | 0.6% |
| alcoholic beverage | 886 | 2156 | 1064 | 147 | 831 | 158 | 120 | 76 | 167 | 5605 | 2.3% |
| soft drink | 450 | 2672 | 1413 | 446 | 875 | 110 | 360 | 142 | 174 | 6642 | 2.8% |
| food | 52 | 179 | 107 | 53 | 88 | 29 | 55 | 7 | 25 | 595 | 0.2% |
| other | 11 | 46 | 18 | 27 | 10 | 51 | 18 | 7 | 53 | 241 | 0.1% |
| total cans | 1469 | 5526 | 2739 | 1118 | 1908 | 442 | 611 | 252 | 454 | 14519 | 6.0% |
| miscellaneous | | | | | | | | | | | |
| appliances | 5 | 51 | 23 | 13 | 19 | 0 | 4 | 1 | 6 | 122 | 0.1% |
| bottle caps | 627 | 1855 | 2342 | 288 | 513 | 80 | 360 | 178 | 410 | 6653 | 2.8% |
| construction materials | 68 | 310 | 342 | 54 | 304 | 1 | 92 | 8 | 16 | 1195 | 0.5% |
| foil/confectionery wrappers | 842 | 1643 | 2275 | 359 | 641 | 80 | 1175 | 280 | 286 | 7581 | 3.1% |
| 44 gallon drums | 15 | 15 | 7 | 0 | 12 | 3 | 1 | 0 | 1 | 54 | 0.0% |
| paint tins | 17 | 77 | 47 | 6 | 119 | 9 | 26 | 1 | 27 | 329 | 0.1% |
| large metal pieces | 27 | 259 | 120 | 69 | 137 | 10 | 30 | 3 | 55 | 710 | 0.3% |
| pipe (length in metres) | 44 | 104 | 60 | 7 | 82 | 0 | 13 | 2 | 39 | 351 | 0.1% |
| small metal pieces | 95 | 453 | 359 | 37 | 151 | 38 | 106 | 29 | 57 | 1325 | 0.5% |
| wire (length in metres) | 28 | 403 | 175 | 150 | 179 | 111 | 57 | 1 | 31 | 1135 | 0.5% |
| other | 14 | 23 | 26 | 23 | 36 | 14 | 8 | 3 | 8 | 155 | 0.1% |
| total miscellaneous | 1782 | 5193 | 5776 | 1006 | 2193 | 346 | 1872 | 506 | 936 | 19610 | 8.1% |
| total all metal/aluminium | | | | | | | | | | 34129 | 14.1% |
| WOOD | | | | | | | | | | | |
| construction materials | 109 | 179 | 252 | 41 | 191 | 0 | 130 | 4 | 18 | 924 | 0.4% |
| ice cream sticks | 219 | 627 | 868 | 75 | 161 | 25 | 514 | 83 | 80 | 2652 | 1.1% |
| pieces | 165 | 263 | 363 | 43 | 124 | 61 | 35 | 16 | 220 | 1290 | 0.5% |
| other | 68 | 139 | 291 | 69 | 23 | 10 | 110 | 36 | 3 | 749 | 0.3% |
| total wood | 561 | 1208 | 1774 | 228 | 499 | 96 | 789 | 139 | 321 | 5615 | 2.3% |
| MISCELLANEOUS | | | | | | | | | | | |
| batteries | 17 | 76 | 69 | 13 | 19 | 13 | 10 | 10 | 7 | 234 | 0.1% |
| car/machinery parts | 49 | 210 | 98 | 46 | 154 | 16 | 18 | 12 | 25 | 628 | 0.3% |
| carpet (>A4) | 18 | 108 | 110 | 22 | 36 | 6 | 6 | 16 | 27 | 349 | 0.1% |
| cigarette butts | 5419 | 7014 | 9712 | 1161 | 3743 | 456 | 1962 | 1223 | 1659 | 32349 | 13.4% |
| clothing | 204 | 378 | 236 | 73 | 99 | 31 | 71 | 17 | 37 | 1146 | 0.5% |
| food scraps | 31 | 139 | 288 | 63 | 65 | 37 | 458 | 65 | 46 | 1192 | 0.5% |
| furniture | 12 | 52 | 40 | 26 | 37 | 5 | 12 | 0 | 18 | 202 | 0.1% |
| ceramics | 32 | 161 | 403 | 56 | 279 | 5 | 28 | 6 | 2 | 972 | 0.4% |
| shopping trolleys | 12 | 13 | 37 | 11 | 14 | 5 | 5 | 15 | 14 | 126 | 0.1% |
| syringes | 61 | 124 | 162 | 141 | 32 | 35 | 19 | 260 | 153 | 987 | 0.4% |
| other | 122 | 144 | 102 | 42 | 335 | 14 | 94 | 0 | 14 | 867 | 0.4% |
| total miscellaneous | 5977 | 8419 | 11257 | 1654 | 4813 | 623 | 2683 | 1624 | 2002 | 39052 | 16.2% |
| grand total | 28864 | 59490 | 65125 | 15818 | 29425 | 4077 | 24018 | 5694 | 8963 | 241474 | |
| OTHER SUMMARY STATISTICS | | | | | | | | | | | |
| bags surveyed | 320 | 458 | 520 | 169 | 297 | 30 | 310 | 52 | 126 | 2282 | |
| total bags | 724 | 2224 | 2086 | 622 | 1037 | 97 | 599 | 132 | 546 | 8067 | |
| % | 44.2% | 20.6% | 24.9% | 27.2% | 28.6% | 30.9% | 51.8% | 39.4% | 23.1% | 28.3% | |
| rural sites | 29 | 67 | 29 | 12 | 22 | 2 | 24 | 3 | 5 | 193 | |
| % | 50.0% | 62.6% | 23.6% | 28.6% | 32.8% | 22.2% | 36.4% | 27.3% | 25.0% | 38.4% | |
| urban sites | 29 | 40 | 94 | 30 | 45 | 7 | 42 | 8 | 15 | 310 | |
| % | 50.0% | 37.4% | 76.4% | 71.4% | 67.2% | 77.8% | 63.6% | 72.7% | 75.0% | 61.6% | |
| total sites | 58 | 107 | 123 | 42 | 67 | 9 | 66 | 11 | 20 | 503 | |

Number of surveyed items collected by state

| | ACT | NSW | NT | QLD | SA | TAS | VIC | WA | National | % |
|----------------------------------|-------------|--------------|------------|--------------|-------------|-------------|--------------|-------------|--------------|--------------|
| PLASTICS | | | | | | | | | | |
| bags | | | | | | | | | | |
| chips & confectionary | 568 | 5544 | 60 | 1629 | 2122 | 505 | 4335 | 585 | 15348 | 6.4% |
| food | 78 | 1114 | 15 | 472 | 862 | 185 | 898 | 96 | 3720 | 1.5% |
| garbage/rubbish | 50 | 1447 | 50 | 427 | 695 | 333 | 1518 | 161 | 4681 | 1.9% |
| supermarket/retail | 140 | 1666 | 17 | 701 | 552 | 136 | 1568 | 104 | 4884 | 2.0% |
| other | 0 | 243 | 0 | 297 | 70 | 19 | 116 | 7 | 752 | 0.3% |
| sub-total plastic bags | 836 | 10014 | 142 | 3526 | 4301 | 849 | 8435 | 953 | 29056 | 12.1% |
| bottles | | | | | | | | | | |
| automotive Oils | 4 | 138 | 0 | 36 | 18 | 8 | 94 | 9 | 307 | 0.1% |
| food | 28 | 661 | 21 | 106 | 73 | 78 | 374 | 86 | 1427 | 0.6% |
| milk | 12 | 594 | 15 | 247 | 106 | 33 | 413 | 106 | 1526 | 0.6% |
| laundry/cleaning | 4 | 138 | 6 | 46 | 11 | 4 | 80 | 17 | 306 | 0.1% |
| PET | 238 | 2154 | 52 | 644 | 102 | 157 | 1466 | 184 | 4997 | 2.1% |
| fruit juice | 36 | 1215 | 26 | 373 | 154 | 71 | 677 | 272 | 2824 | 1.2% |
| water/softdrink | 116 | 2854 | 31 | 948 | 149 | 126 | 2508 | 409 | 7141 | 3.0% |
| other | 32 | 142 | 7 | 111 | 27 | 33 | 39 | 2 | 393 | 0.2% |
| sub-total plastic bottles | 470 | 7896 | 158 | 2511 | 640 | 510 | 5651 | 1085 | 18921 | 7.9% |
| miscellaneous | | | | | | | | | | |
| bottle caps/lids | 351 | 3265 | 65 | 2193 | 757 | 214 | 2218 | 425 | 9488 | 3.9% |
| cigarette Lighter | 21 | 339 | 3 | 175 | 67 | 11 | 222 | 27 | 865 | 0.4% |
| cling wrap | 65 | 1063 | 6 | 235 | 819 | 70 | 705 | 189 | 3152 | 1.3% |
| packaging | 96 | 1339 | 5 | 271 | 506 | 240 | 1794 | 212 | 4463 | 1.9% |
| containers | 21 | 327 | 20 | 87 | 157 | 11 | 207 | 157 | 987 | 0.4% |
| cutlery/cups/utensils | 56 | 568 | 0 | 201 | 184 | 32 | 444 | 144 | 1629 | 0.7% |
| disposable nappies | 14 | 170 | 14 | 56 | 24 | 12 | 66 | 35 | 391 | 0.2% |
| fish equipment | 2 | 248 | 3 | 93 | 23 | 2 | 32 | 0 | 403 | 0.2% |
| toys/sport equipment | 15 | 196 | 0 | 63 | 44 | 17 | 118 | 10 | 463 | 0.2% |
| crates | 2 | 118 | 0 | 7 | 12 | 29 | 79 | 7 | 254 | 0.1% |
| rope | 15 | 214 | 5 | 243 | 52 | 26 | 125 | 38 | 718 | 0.3% |
| PVC pipe | 13 | 429 | 2 | 58 | 127 | 8 | 94 | 28 | 759 | 0.3% |
| sanitary pads/surgical dressings | 8 | 78 | 0 | 34 | 7 | 4 | 58 | 9 | 198 | 0.1% |
| 6 pack rings | 36 | 208 | 4 | 193 | 63 | 23 | 304 | 94 | 925 | 0.4% |
| straws | 123 | 2203 | 0 | 888 | 332 | 93 | 1280 | 267 | 5186 | 2.2% |
| tapes/straps/fastenings | 22 | 355 | 0 | 130 | 101 | 20 | 304 | 33 | 965 | 0.4% |
| other | 28 | 586 | 0 | 356 | 188 | 47 | 260 | 69 | 1534 | 0.6% |
| sub-total miscellaneous | 888 | 11706 | 127 | 5283 | 3463 | 859 | 8310 | 1744 | 32380 | 13.4% |
| total plastics | 2194 | 29616 | 427 | 11320 | 8404 | 2218 | 22396 | 3782 | 80357 | 33.4% |
| POLYSTYRENE | | | | | | | | | | |
| cups/plates | 33 | 962 | 2 | 294 | 240 | 72 | 714 | 93 | 2410 | 1.0% |
| fast food containers | 78 | 1177 | 11 | 411 | 183 | 49 | 1051 | 139 | 3099 | 1.3% |
| packaging | 20 | 582 | 21 | 3328 | 79 | 58 | 638 | 127 | 4853 | 2.0% |
| pieces | 405 | 2125 | 1 | 963 | 387 | 59 | 1997 | 115 | 6052 | 2.5% |
| other | 0 | 146 | 0 | 19 | 32 | 0 | 81 | 0 | 278 | 0.1% |
| total polystyrene | 536 | 4992 | 35 | 5015 | 921 | 7 | 4481 | 474 | 16461 | 6.8% |
| GLASS | | | | | | | | | | |
| alcoholic beverage bottles | 306 | 4964 | 5 | 1688 | 352 | 449 | 3364 | 419 | 11547 | 4.8% |
| food jars | 9 | 375 | 0 | 198 | 88 | 6 | 172 | 30 | 878 | 0.4% |
| pieces | 150 | 5931 | 0 | 793 | 688 | 312 | 2477 | 734 | 11085 | 4.6% |
| soft drink bottles | 64 | 1465 | 0 | 365 | 157 | 200 | 961 | 89 | 3301 | 1.4% |
| fruit juice bottles | 11 | 555 | 0 | 209 | 71 | 44 | 423 | 129 | 1442 | 0.6% |
| light globe | 7 | 87 | 0 | 24 | 8 | 4 | 16 | 20 | 166 | 0.1% |
| other | 0 | 25 | 0 | 52 | 18 | 1 | 43 | 0 | 139 | 0.1% |
| total glass | 547 | 13402 | 5 | 3329 | 1382 | 1016 | 7456 | 1421 | 28558 | 11.9% |

| | ACT | NSW | NT | QLD | SA | TAS | VIC | WA | National | % |
|--------------------------------|-------------|--------------|------------|--------------|--------------|-------------|--------------|--------------|---------------|--------------|
| RUBBER | | | | | | | | | | |
| condoms | 10 | 112 | 0 | 41 | 24 | 1 | 178 | 9 | 375 | 0.2% |
| gloves | 13 | 245 | 0 | 127 | 59 | 26 | 168 | 13 | 651 | 0.3% |
| thongs/shoes | 3 | 181 | 6 | 186 | 34 | 11 | 67 | 43 | 531 | 0.2% |
| tyres | 4 | 266 | 0 | 70 | 67 | 28 | 142 | 37 | 614 | 0.3% |
| other | 15 | 131 | 0 | 256 | 67 | 18 | 103 | 22 | 612 | 0.3% |
| total rubber | 45 | 935 | 6 | 680 | 251 | 84 | 658 | 124 | 2783 | 1.2% |
| PAPER/CARDBOARD | | | | | | | | | | |
| bags | 82 | 874 | 16 | 163 | 254 | 97 | 528 | 112 | 2126 | 0.9% |
| boxes | 68 | 605 | 10 | 129 | 226 | 41 | 294 | 75 | 1448 | 0.6% |
| cigarette packets | 139 | 1744 | 3 | 661 | 350 | 235 | 1183 | 167 | 4482 | 1.9% |
| cups | 8 | 568 | 0 | 201 | 175 | 42 | 387 | 76 | 1457 | 0.6% |
| drink cartons | 47 | 740 | 24 | 255 | 262 | 60 | 633 | 152 | 2173 | 0.9% |
| milk cartons | 41 | 440 | 1 | 188 | 336 | 30 | 285 | 66 | 1387 | 0.6% |
| egg cartons | 6 | 55 | 0 | 58 | 19 | 7 | 12 | 27 | 184 | 0.1% |
| fast food packaging | 110 | 1520 | 7 | 808 | 172 | 106 | 1526 | 252 | 4501 | 1.9% |
| napkins/tissues | 27 | 992 | 0 | 352 | 392 | 64 | 830 | 88 | 2745 | 1.1% |
| newspapers/books/magazines | 274 | 1260 | 0 | 169 | 256 | 99 | 524 | 193 | 2775 | 1.2% |
| large paper(>A4) pieces | 14 | 590 | 0 | 222 | 236 | 25 | 156 | 30 | 1273 | 0.5% |
| small paper pieces | 162 | 3159 | 51 | 749 | 1100 | 267 | 2392 | 518 | 8398 | 3.5% |
| wine cask | 19 | 123 | 0 | 47 | 33 | 6 | 49 | 7 | 284 | 0.1% |
| other | 110 | 318 | 22 | 63 | 72 | 0 | 137 | 4 | 726 | 0.3% |
| total paper/cardboard | 1107 | 12988 | 134 | 4065 | 3883 | 1079 | 8936 | 1767 | 33959 | 14.1% |
| METAL/ALUMINIUM | | | | | | | | | | |
| cans | | | | | | | | | | |
| aerosol | 22 | 530 | 0 | 165 | 38 | 27 | 154 | 13 | 949 | 0.4% |
| alcoholic beverage | 98 | 1976 | 0 | 1109 | 297 | 327 | 1978 | 340 | 6125 | 2.5% |
| soft drink | 166 | 2848 | 35 | 1198 | 220 | 240 | 1707 | 423 | 6837 | 2.8% |
| food | 8 | 217 | 0 | 52 | 41 | 15 | 135 | 10 | 478 | 0.2% |
| other | 0 | 5 | 0 | 21 | 93 | 0 | 10 | 1 | 130 | 0.1% |
| sub-total cans | 294 | 5576 | 35 | 2545 | 689 | 609 | 3984 | 787 | 14519 | 6.0% |
| miscellaneous | | | | | | | | | | |
| appliances | 0 | 67 | 0 | 18 | 16 | 4 | 15 | 2 | 122 | 0.1% |
| bottle caps | 289 | 2683 | 17 | 1238 | 328 | 143 | 1761 | 267 | 6726 | 2.8% |
| construction materials | 23 | 598 | 1 | 150 | 35 | 36 | 277 | 78 | 1198 | 0.5% |
| foil/confectionary wrappers | 196 | 2005 | 152 | 1337 | 590 | 193 | 2623 | 372 | 7468 | 3.1% |
| 44 gallon drums | 0 | 24 | 0 | 12 | 1 | 0 | 17 | 0 | 54 | 0.0% |
| paint tins | 5 | 194 | 0 | 36 | 24 | 9 | 44 | 17 | 329 | 0.1% |
| large metal pieces | 20 | 311 | 1 | 86 | 118 | 16 | 119 | 42 | 713 | 0.3% |
| pipe | 7 | 168 | 0 | 30 | 56 | 8 | 61 | 25 | 355 | 0.1% |
| small metal pieces | 7 | 556 | 3 | 138 | 166 | 46 | 395 | 40 | 1351 | 0.6% |
| wire | 26 | 439 | 1 | 215 | 78 | 19 | 347 | 13 | 1138 | 0.5% |
| other | 2 | 56 | 0 | 32 | 32 | 0 | 28 | 6 | 156 | 0.1% |
| sub-total miscellaneous | 575 | 7101 | 175 | 3292 | 1444 | 474 | 5687 | 862 | 19610 | 8.1% |
| total metal/aluminium | 869 | 12677 | 210 | 5837 | 2133 | 1083 | 9671 | 1649 | 34129 | 14.2% |
| WOOD | | | | | | | | | | |
| construction materials | 30 | 451 | 0 | 99 | 47 | 38 | 225 | 41 | 931 | 0.4% |
| ice cream sticks | 30 | 1089 | 10 | 409 | 161 | 51 | 781 | 111 | 2642 | 1.1% |
| wood pieces | 39 | 519 | 2 | 296 | 114 | 39 | 235 | 47 | 1291 | 0.5% |
| wood other | 13 | 387 | 0 | 57 | 66 | 36 | 164 | 28 | 751 | 0.3% |
| total wood | 112 | 2446 | 12 | 861 | 388 | 164 | 1405 | 227 | 5615 | 2.3% |
| MISCELLANEOUS | | | | | | | | | | |
| batteries | 4 | 74 | 5 | 39 | 41 | 2 | 28 | 6 | 199 | 0.1% |
| car/machinery parts | 41 | 301 | 0 | 64 | 71 | 14 | 88 | 16 | 595 | 0.2% |
| carpet | 1 | 107 | 0 | 37 | 48 | 10 | 93 | 5 | 301 | 0.1% |
| cigarette butts | 815 | 10268 | 0 | 4872 | 1779 | 1843 | 11815 | 1259 | 32651 | 13.6% |
| clothing | 31 | 429 | 8 | 255 | 100 | 47 | 215 | 34 | 1119 | 0.5% |
| food scraps | 1 | 544 | 0 | 88 | 145 | 8 | 326 | 68 | 1180 | 0.5% |
| furniture | 2 | 72 | 0 | 39 | 19 | 5 | 40 | 4 | 181 | 0.1% |
| ceramics | 0 | 552 | 0 | 89 | 30 | 7 | 248 | 11 | 937 | 0.4% |
| shopping trolleys | 7 | 29 | 0 | 18 | 4 | 0 | 19 | 10 | 87 | 0.0% |
| syringes | 7 | 232 | 0 | 169 | 40 | 27 | 450 | 29 | 954 | 0.4% |
| other | 22 | 519 | 0 | 40 | 123 | 56 | 74 | 14 | 848 | 0.4% |
| total miscellaneous | 931 | 13127 | 13 | 5710 | 2400 | 2019 | 13396 | 1456 | 39052 | 16.2% |
| grand total | 6341 | 90183 | 842 | 36817 | 19762 | 7670 | 68399 | 10900 | 240914 | |



Clean Up Australia Ltd

www.cleanup.com.au

18 Bridge Road, Glebe NSW 2037

Telephone [02] 9552 6177

Facsimile [02] 9552 4468

Email cleanup@cleanup.com.au

